



DE VALK
YACHT BROKERS



FEADSHIP CANOE STERN



DE VALK
YACHT BROKERS

FEADSHIP CANOE STERN

BROKER'S COMMENTS

"Haddock was built in 1962 by De Vries Aalsmeer (Feadship) under building number 569. She had a major refit in 2007/2008. She is a perfect mid sized long range classic cruising vessel. She combines a beautiful classical design with a practical use for 7 guests in three cabins and is all combined with the pedigree of Feadship and Vosper Fin stabilizers."

Mark Hesselmans

SPECIFICATIONS

Dimensions	19,00 x 5,00 x 1,50 (m)	Builder	De Vries Aalsmeer
Built	1962	Cabins	3
Material	Steel	Berths	7
Engine(s)	2 x Mercedes OM352 diesel	Hp/Kw	2 x 130 (hp), 95,55 (kw)
Asking price	EUR 395.000 (vat: paid)	Lying	at sales office

CONTACT

Sales office	De Valk Loosdrecht	Telephone	+31 35 582 90 30
Address	't Breukeleveense Meentje 6 1231 LM Loosdrecht / Wijdmeren The Netherlands	Fax	+31 (0)35 582 90 39
		E-mail	loosdrecht@devalk.nl

DISCLAIMER

These particulars are given in good faith as supplied but cannot be guaranteed and cannot be used for contracts.



FEADSHIP CANOE STERN

GENERAL

Model	FEADSHIP CANOE STERN
Type	motor yacht
LOA (m)	19,00
Beam (m)	5,00
Draft (m)	1,50
Air draft (m)	6,00
Year built	1962
Launched	After extensive refit and sandblasting in 2008
Builder	De Vries Aalsmeer
Country	The Netherlands
Designer	Oehlmann
Displacement (t)	49
Gross tonnage	52
CE norm	NA
Hull material	steel
Hull colour	Alexeal Flag Blue (2008)
Hull shape	round-bilged
Keel type	box keel
Superstructure material	aluminium
Rubbing strake	stainless steel
Deck material	steel
Deck finish	teak Needs replacement
Superstructure deck finish	teak Needs replacement
Cockpit deck finish	teak Needs replacement
Antifouling (year)	yes
Dorades	yes
Window frame	aluminium
Window material	glass Single
Deckhatch	2x
Portholes	brass



FEADSHIP CANOE STERN

Insulation	yes
Flybridge	/ Sundeck
Flybridge cover	yes
Fuel tank (litre)	steel 2,200
Freshwater tank (litre)	steel 2,000
Blackwater tank (litre)	yes
Greywater tank (litre)	steel 500
Wheel steering	chain steering
Inside helm position	yes
More info on hull	yes
Extra info	CVO vallid untill 2025

ACCOMMODATION

Cabins	3
Berths	7
Interior	mahogany
Layout	Private
Floor	carpet
Aft deck	yes
Pilot house	yes
Deck saloon	yes
Saloon	yes
Headroom saloon (m)	2,10 +/-
Heating	central hot water Maritime Booster 2008, 3x Kickspace 600
Air-conditioning	single cycle airco Saloon and owners cabin
Navigation center	yes
Chart table	yes
Aft Cabin	yes
Opening door to cockpit	yes
Galley	yes



FEADSHIP CANOE STERN

Countertop	corian
Sink	stainless steel
Cooker	electric 230v 4-burners
Microwave/oven combi	Whirlpool
Fridge	Danfoss 24v and Coolmatic 24v
Freezer	Liebherr 24v/230v
Hot water system	2 x Boiler
Water pressure system	electrical
Dishwasher	Bosch
Ice maker	Bifinett
Coffee maker	Krups coffee maker / Illy espresso maker
Owners cabin	French bed
Wardrobe	hanging/drawers/shelves
Bathroom	en suite
Toilet	Replaced 2008
Toilet system	electric
Wash basin	at the toilet
Shower	shared
Guest cabin 1	double bed + single bed
Wardrobe	hanging/drawers/shelves
Bathroom	en suite
Toilet	shared
Toilet system	electric
Wash basin	in the bathroom
Shower	shared
Guest cabin 2	double bed
Wardrobe	hanging and shelves
Washing machine/dryer combi	Bosch

MACHINERY

No of engines	2
----------------------	---



FEADSHIP CANOE STERN

Make	Mercedes
Type	OM352
HP	130
kW	95.55
Fuel	diesel
Year installed	1973
Maximum speed (kn)	9,5
Cruising speed (kn)	8
Consumption (l/hr)	16
Range (nm)	1400
Engine hours	4000
Engine cooling system	freshwater heat exchanger
Drive	shaft
Engine controls	bowden cable
Gearbox	hydraulic
Exhaust	watercooled
Propeller type	fixed
Propeller shaft material	stainless steel
Shaft lubrication	grease
Electric bilge pump	yes
Electrical installation	Overhauled 2008
Generator	Dieselite MDL 8 KW
Start battery	Start battery 1 x 24 volt 1 x 12 volt (2021)
Service battery	Service battery 12 x 2 volt (2021)
Battery charger	Freedom 25 65 amp
Inverter	1 x Freedom 3500 Va, 1 x Freedom 1200 Va
Shorepower	with cable
Stabilizers	fin Vosper Maxi-Fin

NAVIGATION



FEADSHIP CANOE STERN

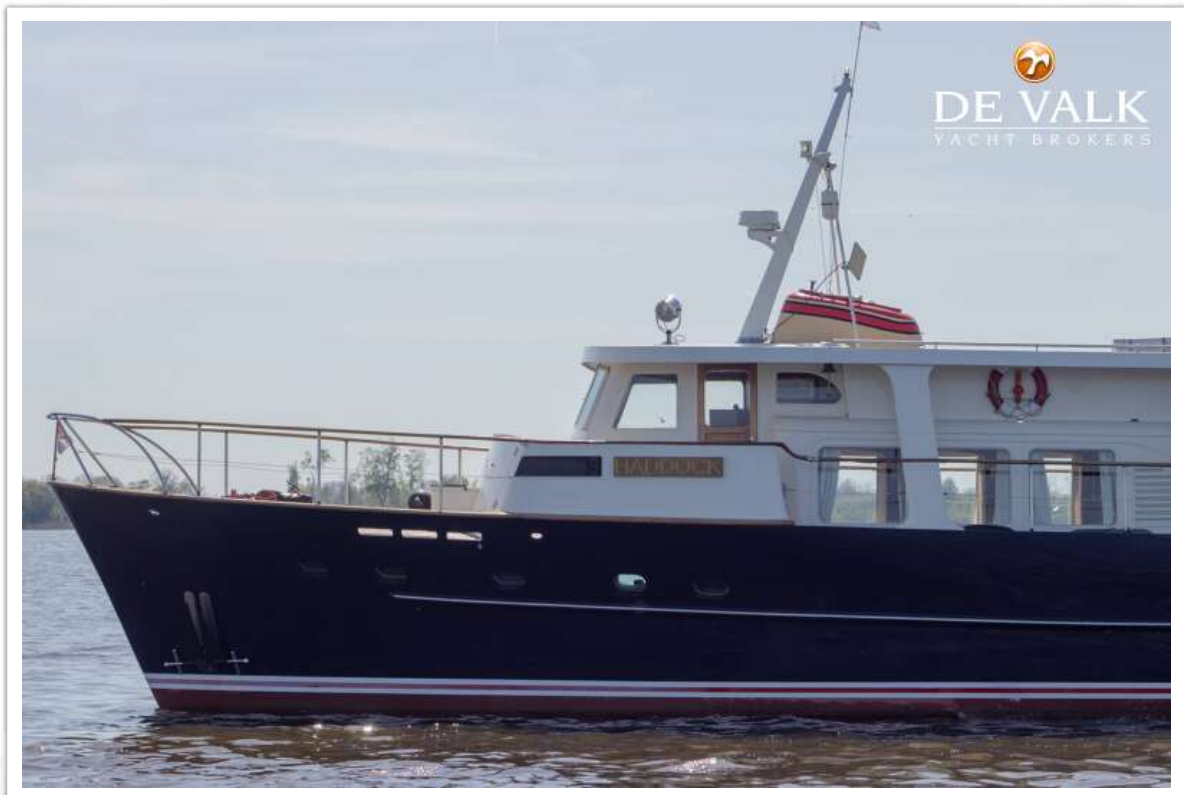
Compass	Plath
Depth sounder	Furuno LS-4100
Windset	yes
VHF	Sailor RT144c, D72S CRN Paris
Autopilot	Furuno FAP-825
Radar	Furuno 1720
GPS	Furuno GP-30
Radio receiver	Sailor R108
Camera	Clarion
Navigation lights	yes
Searchlight	yes

EQUIPMENT

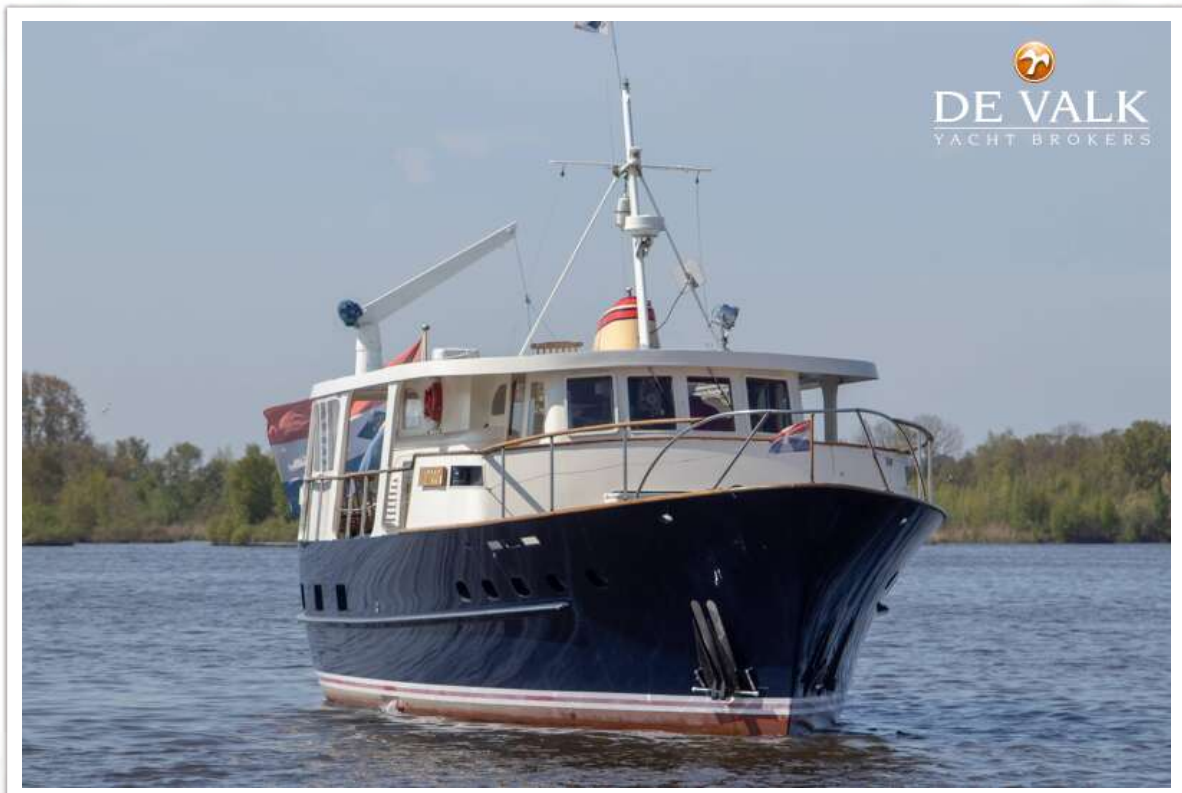
Dodger	yes
Cockpit table	yes
Cockpit chairs	yes
Anchor	Winch serviced 2008
Windlass	electrical
Deck wash	yes
Deck crane	electric
Sea railing	wood Mahony
Railing side opening gates	yes
Wiper	yes
Horn	yes
Fenders	yes
Mooring lines	yes
TV	yes
Clock - barometer	Shatz



FEADSHIP CANOE STERN



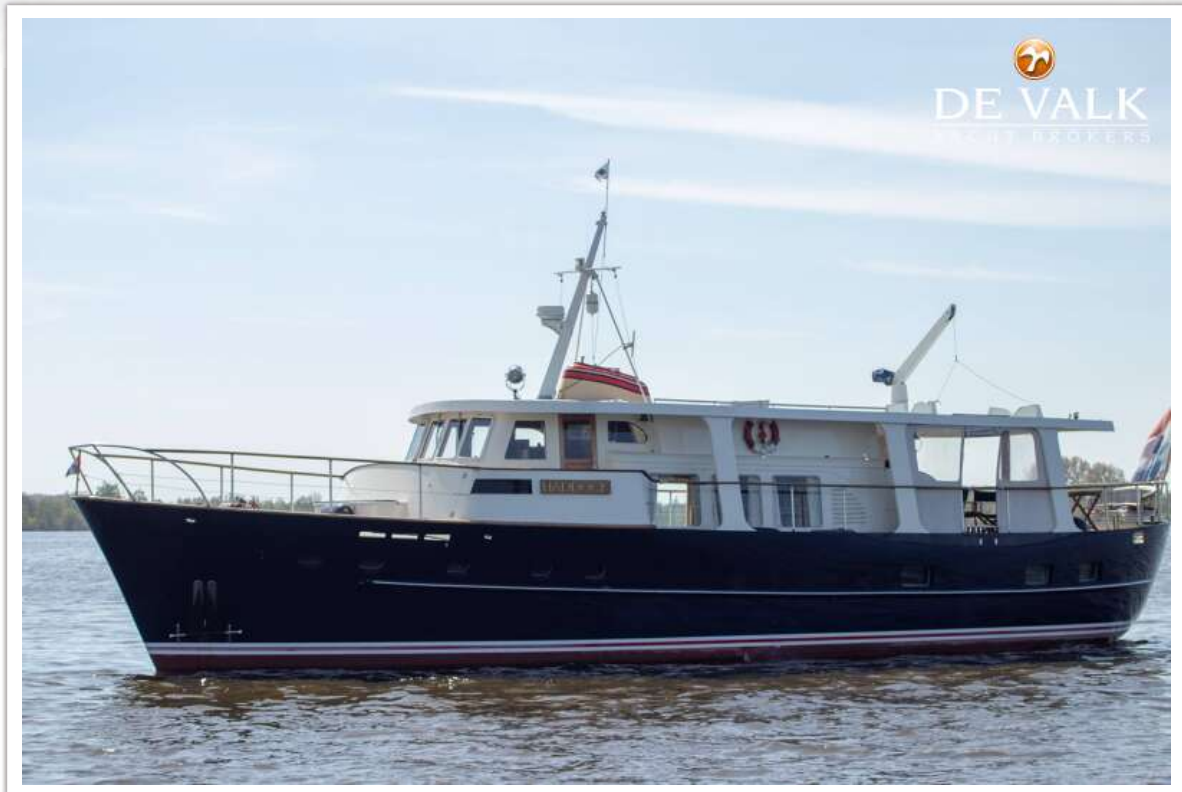
FEADSHIP CANOE STERN



FEADSHIP CANOE STERN



FEADSHIP CANOE STERN



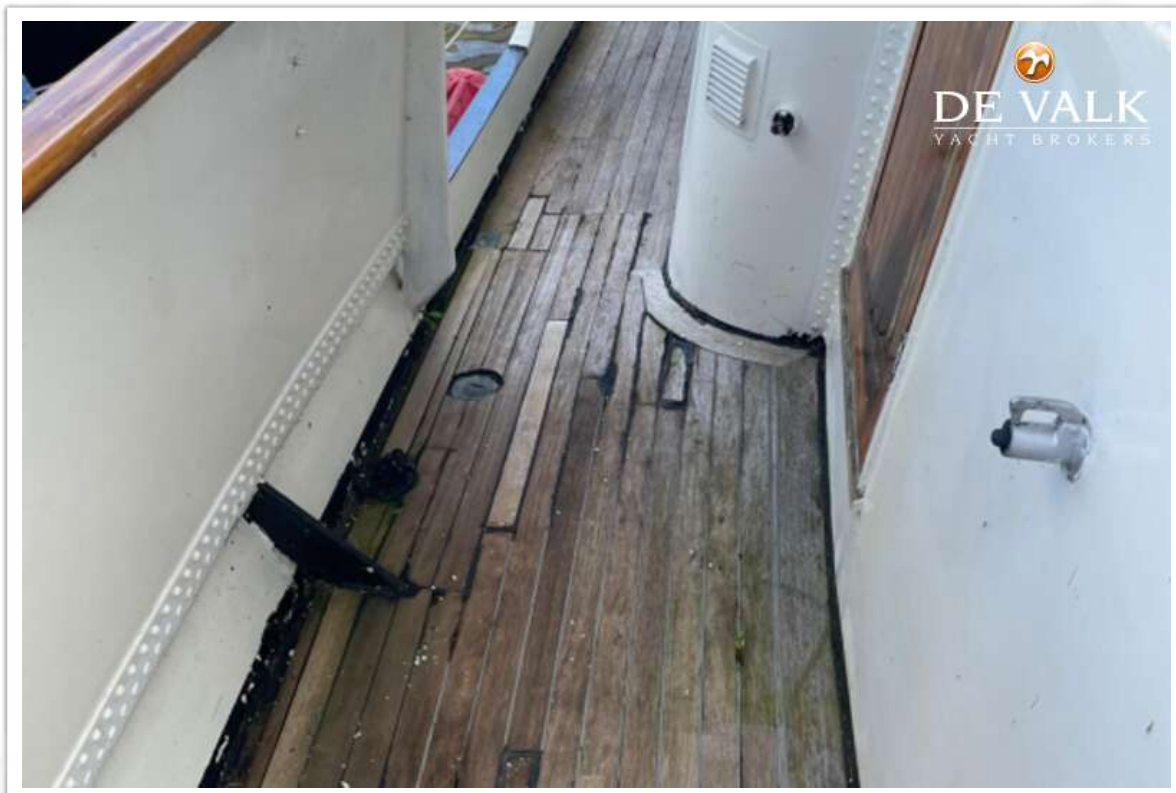
FEADSHIP CANOE STERN



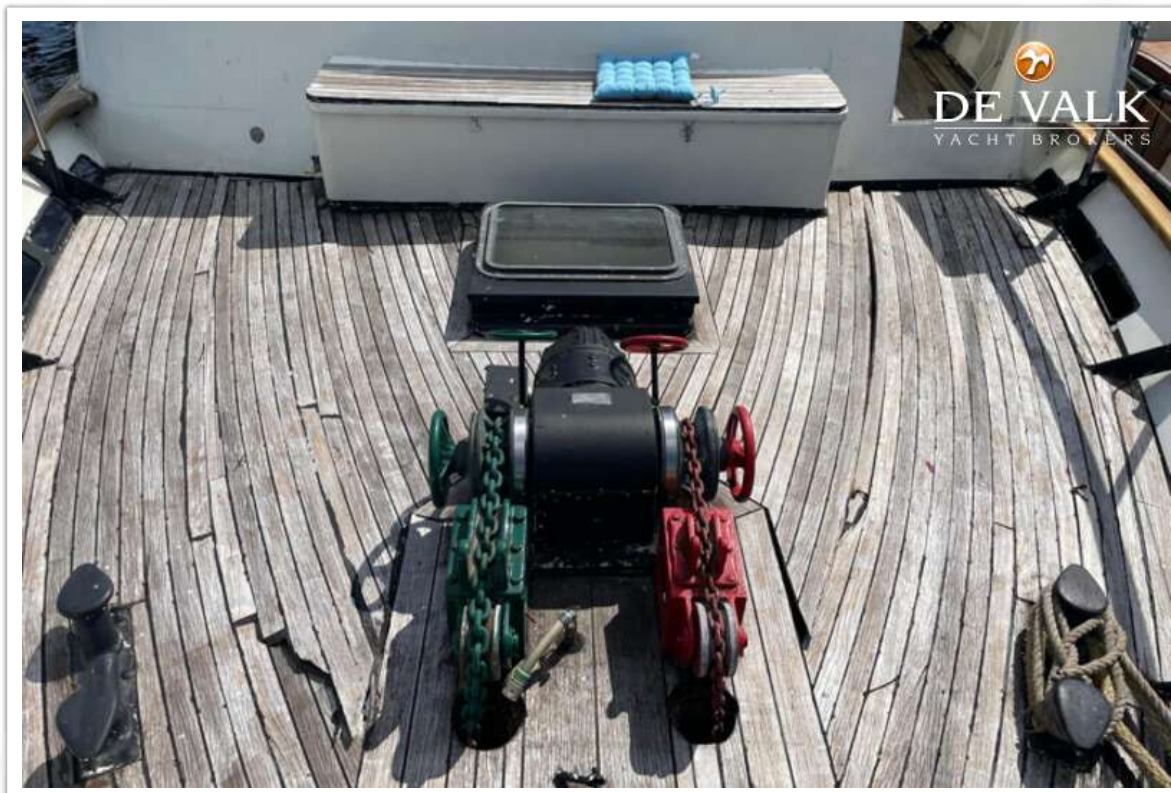
FEADSHIP CANOE STERN



FEADSHIP CANOE STERN



FEADSHIP CANOE STERN



FEADSHIP CANOE STERN



FEADSHIP CANOE STERN



FEADSHIP CANOE STERN



FEADSHIP CANOE STERN



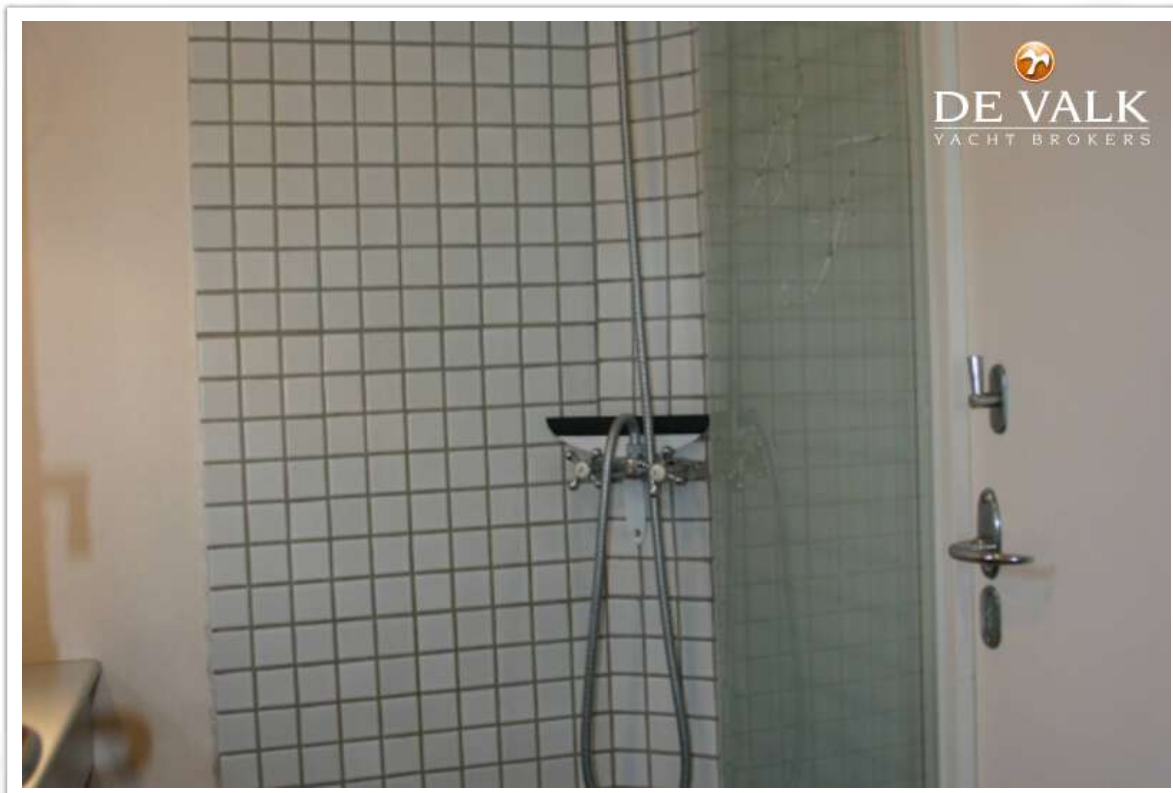
FEADSHIP CANOE STERN



FEADSHIP CANOE STERN



FEADSHIP CANOE STERN



FEADSHIP CANOE STERN



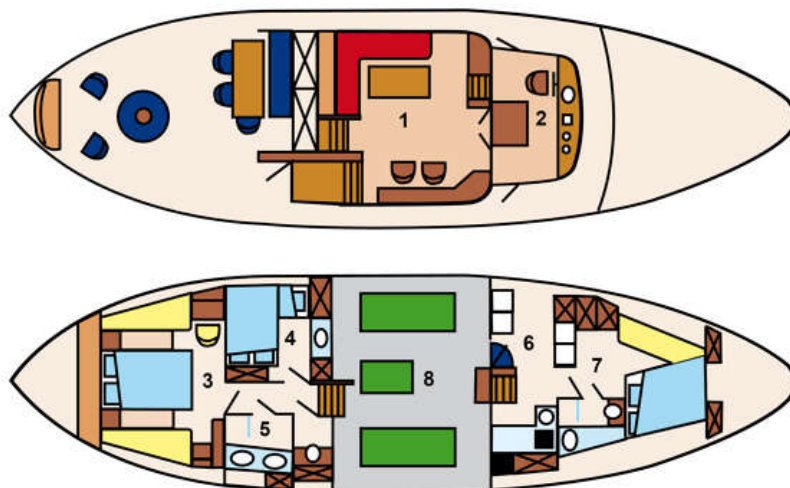
FEADSHIP CANOE STERN



FEADSHIP CANOE STERN



M.Y. HADDOCK



- | | |
|----------------|---------------|
| 1 Salon | 5 Bathroom |
| 2 Bridge | 6 Pantry |
| 3 Master cabin | 7 Guest cabin |
| 4 Guest cabin | 8 Engine room |



FEADSHIP CANOE STERN

